

TR8100 Thermostat Instructions

ver 1.2

LCD symbols

Symbols	Description
	Turning on/off the thermostat
	The buttons are locked
	Heating is turned on
	Frost protection activated
RT	Room temperature
FT	Floor temperature
AUTO	Automatic mode, executes the programmed schedules
O/RIDE	Temporary temperature override
Err	Meaning that sensor is short-circuit or broken



Configuration Menu

To enter into menu settings, follow below 2 steps,

Step 1, Turn the thermostat off by pressing ; Step 2, Press

Then you will see menu 01. Press or to select the menu number. Use or in the center adjust the setting.

Press to accept and store.

Menu #	Features description	Features Explanation	Adjustment (press or to adjust)
01	Model selection	This thermostat is a combination model allowing you to choose between 3 different models. A, AF and F model. A model: air only, with built in sensor AF model: air & floor, with both built in and remote sensor F model: floor only, with remote sensor	A, AF, F
02	Temperature readout (AF model only)	This gives option to choose to show air temperature, floor temperature or to show both floor & air in interval.	A= to show air temperature only, F=to show floor temperature only, A--F = to show both in 5 second intervals
03	Maximum floor temperature (AF model only)	This is to protect the floor surface by limit the floor temp.	40 °C by default, setting range 20°C ~ 40°C
04	Backlight turning-on time	This is to set the backlight turning-on time.	30 seconds(default)
05	Temperature format	This allows users to select between °C or °F.	°C or °F
06	Clock format	12 Hour or 24 Hour clock format selection	24H (default)=24-hour clock, 12H =12-hour clock
07	Frost protection	This is to avoid room temperature goes below 5°C	ON = activated; OFF = deactivated
08	Software version	This is to view the current software version	For review only
09	Display style	This gives option to show more or less contents on LCD	1= show day and program number; 2= show set temp and program number; 3= do not show day, program number and set temp
10	Key click sound	Choose whether or not a key click sound is audible when you press the LCD screen	ON = sound audible; OFF = sound off
11	Calibrate the room temperature	Used to compensate for any difference between the displayed room temperature and a thermometer	0 °C by default, -5°C ~ +5°C
12	Calibrate the floor temperature	Used to compensate for any difference between the displayed floor temperature and a thermometer	0 °C by default, -5°C ~ +5°C
13	Heating mode function	Used to activate or deactivate the heating mode function. If activated, thermostat will have a Heating Mode button. You will have 4 options of heating mode. Auto auto mode comfort temperature mode economy temperature mode vacation temperature mode	ON = activated; OFF = deactivated

Setting the clock and day of the week

This thermostat is fitted with a real time clock. It is essential that the clock time and day are set accurately if you require your programmed events to start on time. Follow below steps,

1) Touch time display and you will see time flashing. Use or to change the time. Press and hold or to change the time faster.

2) Press to move to the Day setting. Use or to change.

3) Press to store and exit.

TR8100 Thermostat Instructions

ver 1.2

English

Save money by setting program schedules

This thermostat can be individual 7-day programmable. For each day of the week you are able to have 4 timed set temperature schedules.

Program	Start Time	Setpoint	
1	WAKE 07:00	22 °C	Set to the time you would like to wake to and the temperature you want during the morning, until you left for the day.
2	LEAVE 09:30	16 °C	Set to the time you leave home and the temperature you wish your home to maintain while you are away at work perhaps.
3	RETURN 16:30	22 °C	Set to the time you return home at end of the day and the temperature you want during evening until bed time.
4	SLEEP 22:30	16 °C	Set to the time you sleep and the temperature you want overnight(usually a comfortable and energy saving temperature).

Above are default program schedules, to make changes, follow easy steps as below.

1. Press **set schedule**, you will see day display flashing.
2. Use **+** or **-** adjust the day to the day you wish to start programming or to the day you wish to edit an existing event or program.
Press "Day" to select 1-7(All days of the week,Monday to Sunday), Press "Day" again to select 1-5 (Monday to Friday), Press "Day" again to select 1-6(Monday to Saturday), Press "Day" again to select 6-7 (Saturday to Sunday), Press "Day" again to select an individual day.
3. Press **Next**, the LCD will show program 1 with the time display flashing.
4. Use **+** or **-** adjust the time you wish the program 1 event to commence for the currently selected day or days.
5. Press **Next**, the LCD will show a temperature value flashing.
6. Use **+** or **-** set the desired heating temperature to be maintained for the program 1 event.
7. Press **Next**, now the LCD will show program 2 with the time display flashing, signifying the second daily event is now being programmed.
8. Repeat step 4,5,6 to set remaining programs. Press **Done** to store and exit.

Note: During setting programs, press **Delete** (if visible) will clear a program entry and thermostat will maintain the temperature setpoint of the last executed program until the beginning of the next program.

Lock the keypad

To lock the keypad, press and hold the bottom left corner of display for 5 seconds, you will see a lock symbol . To unlock, repeat the steps above.

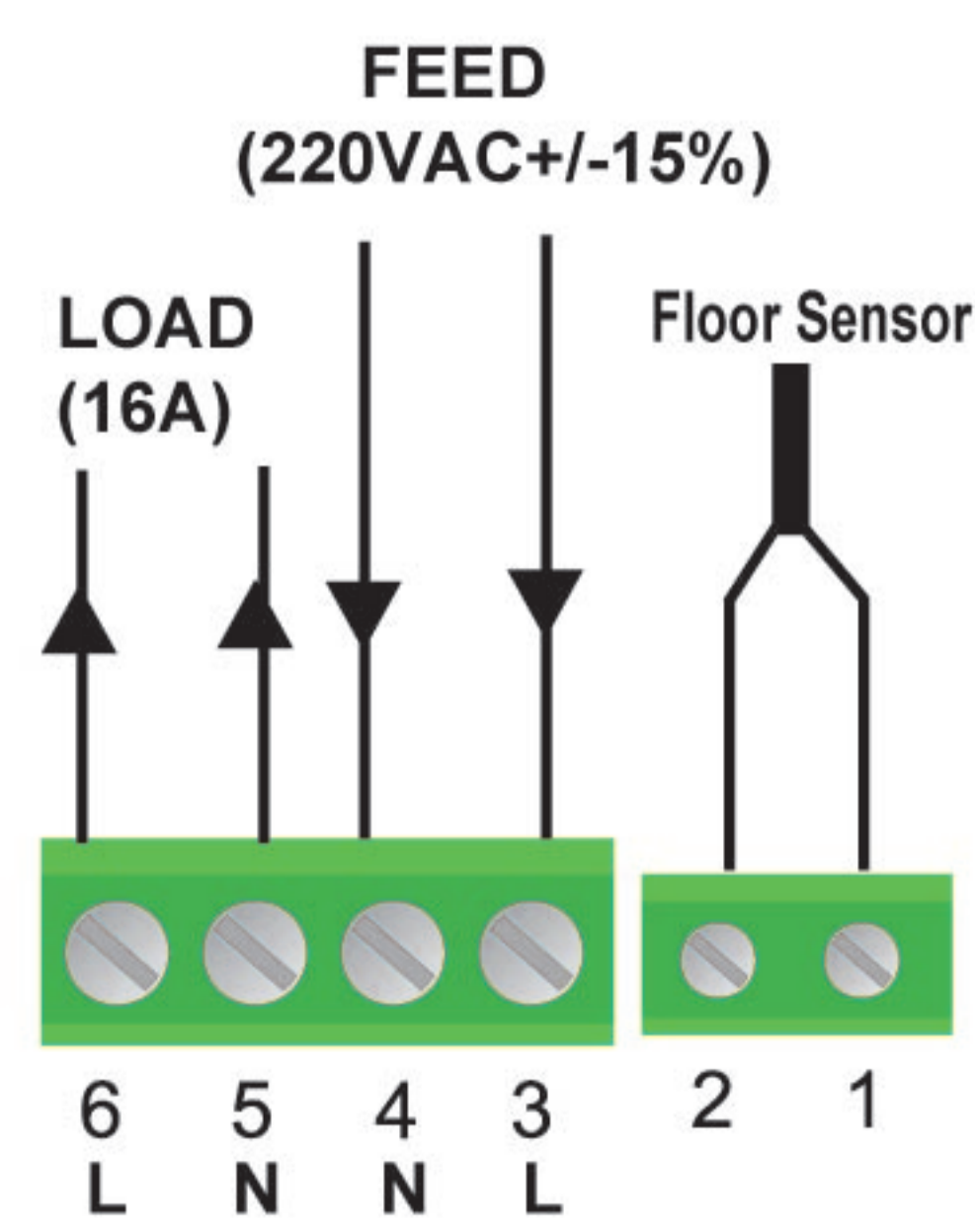
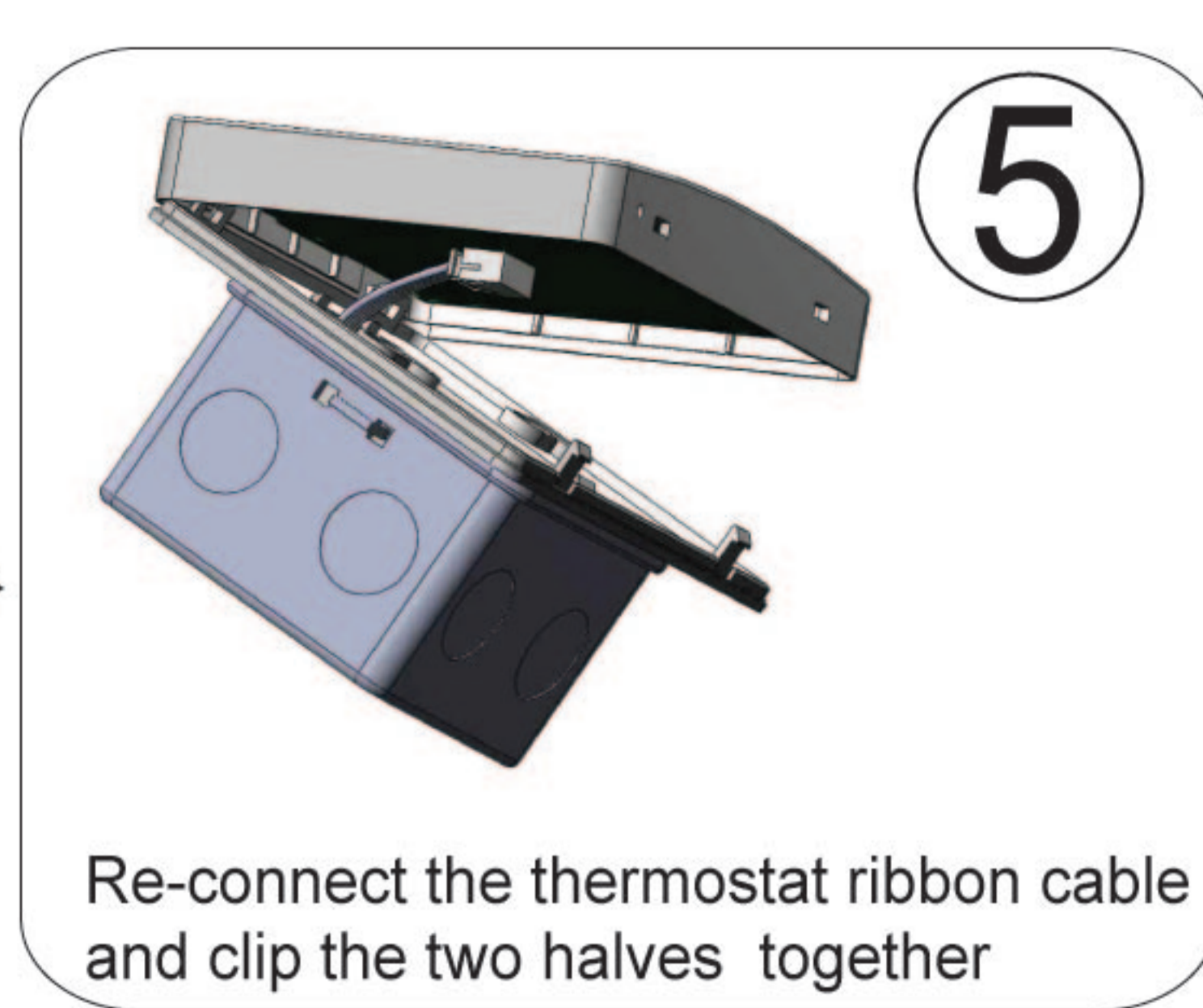
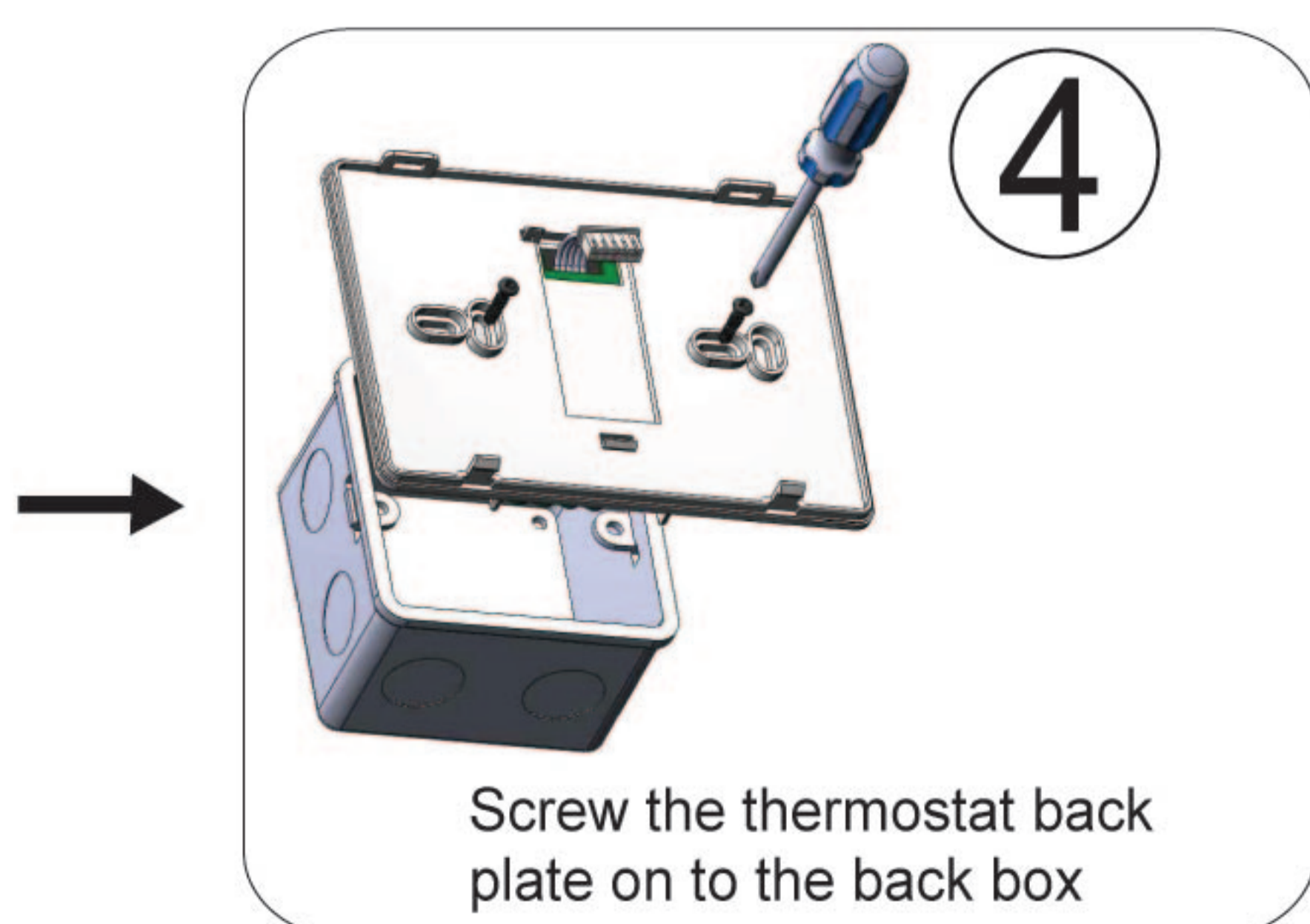
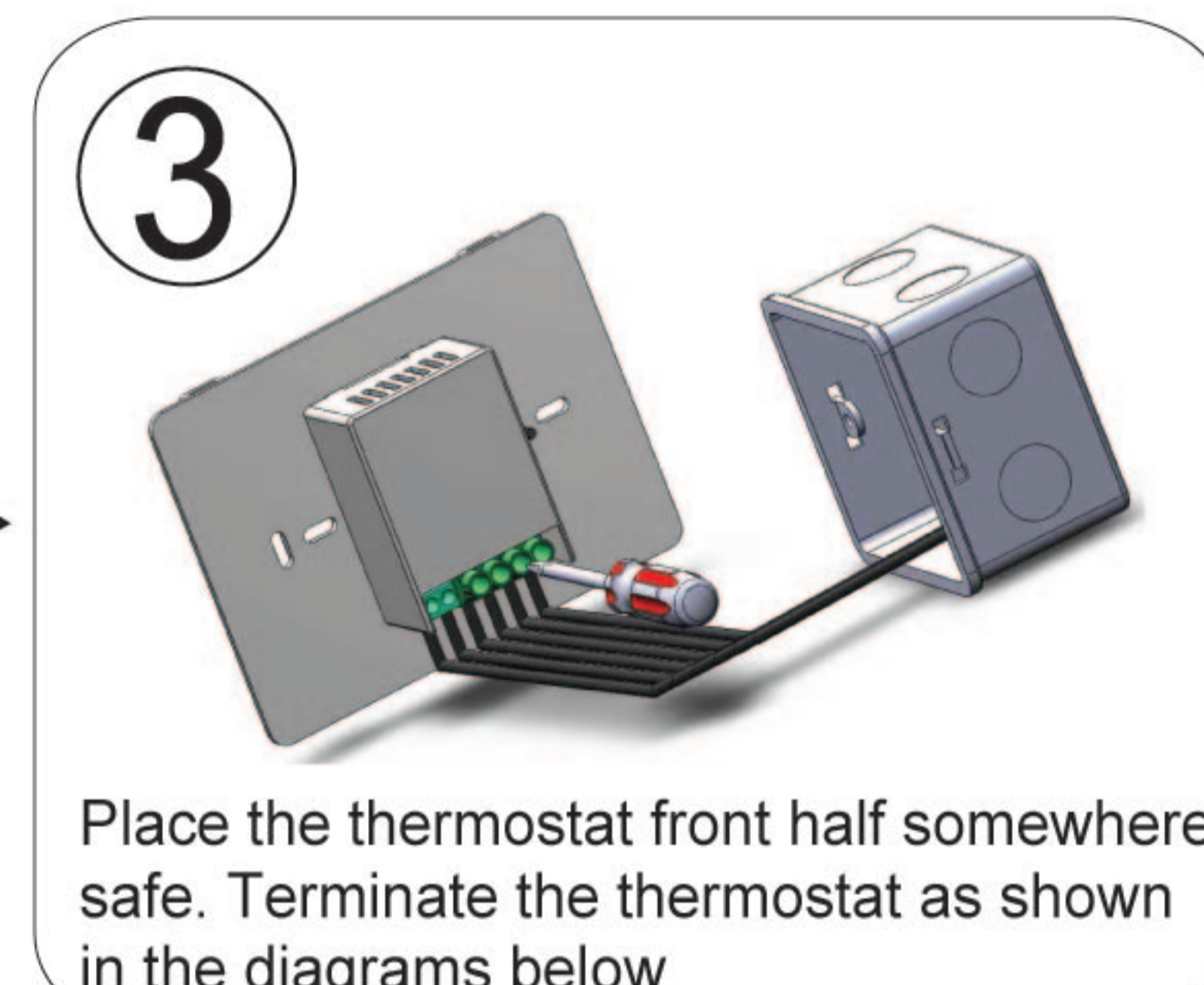
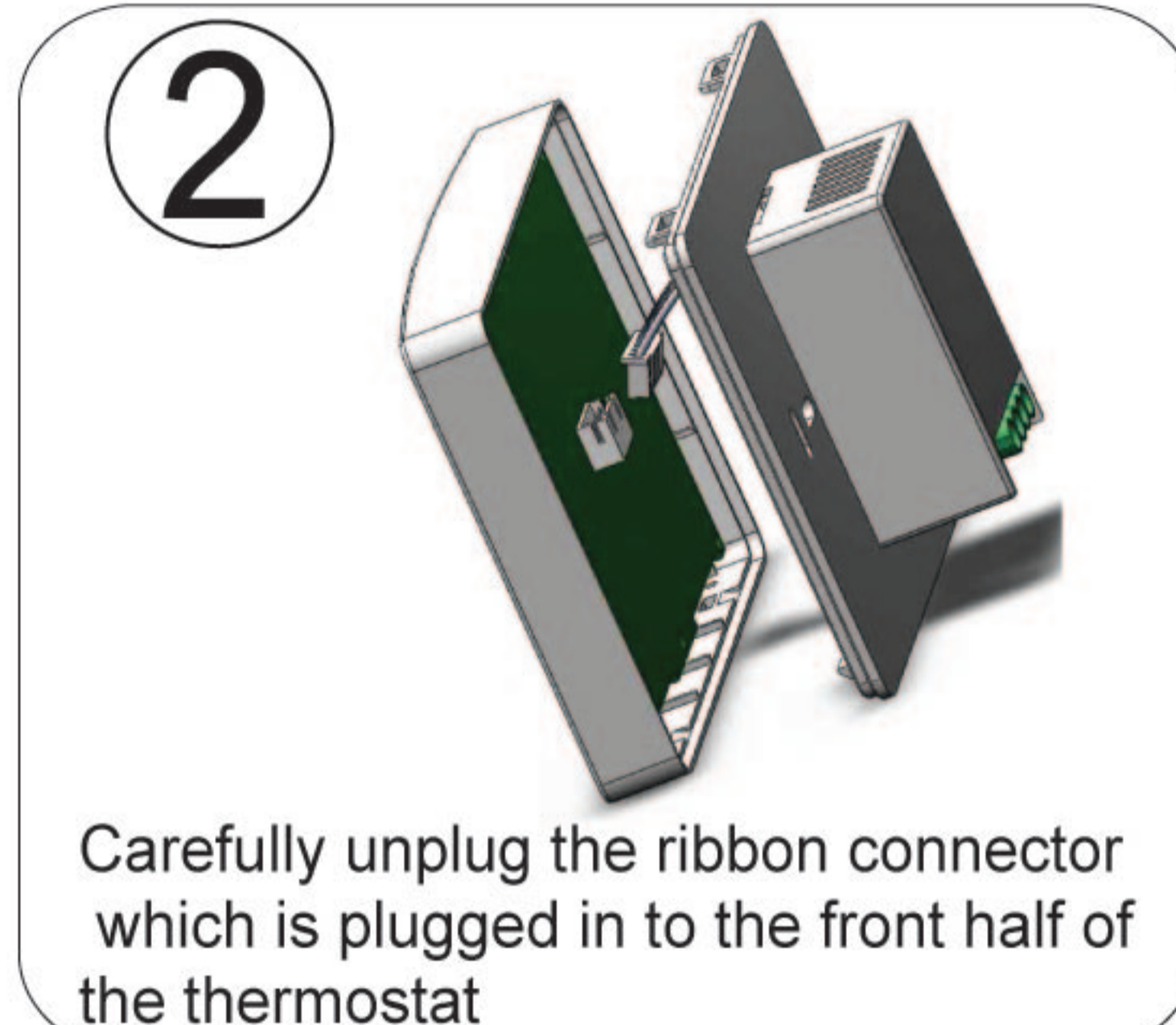
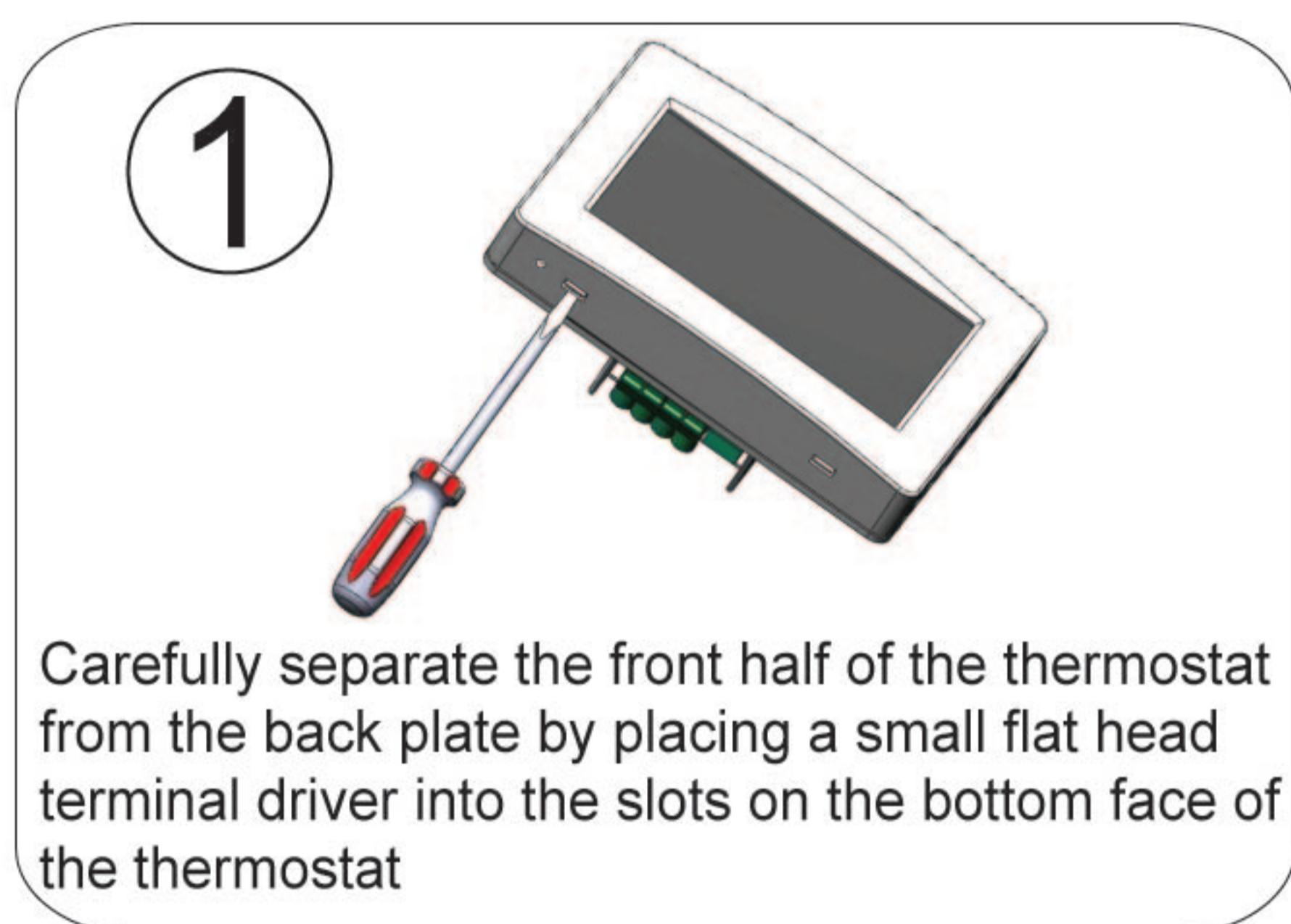
Reset to Factory setting

With thermostat turned off, press and hold the up left corner of display for 5 seconds until you can see RESET on LCD.

Temporary temperature override

Touch the temperature display, and it will start to flash. Use **+** or **-** to adjust. Press **Done** to accept, and you will see "O/RIDE" on LCD. Thermostat will maintain the new set temperature until the next programmed event(comfort level). To cancel the override setting, press **Run Schedule**.

Installation and Wiring



This product should be installed by a qualified electrician.