








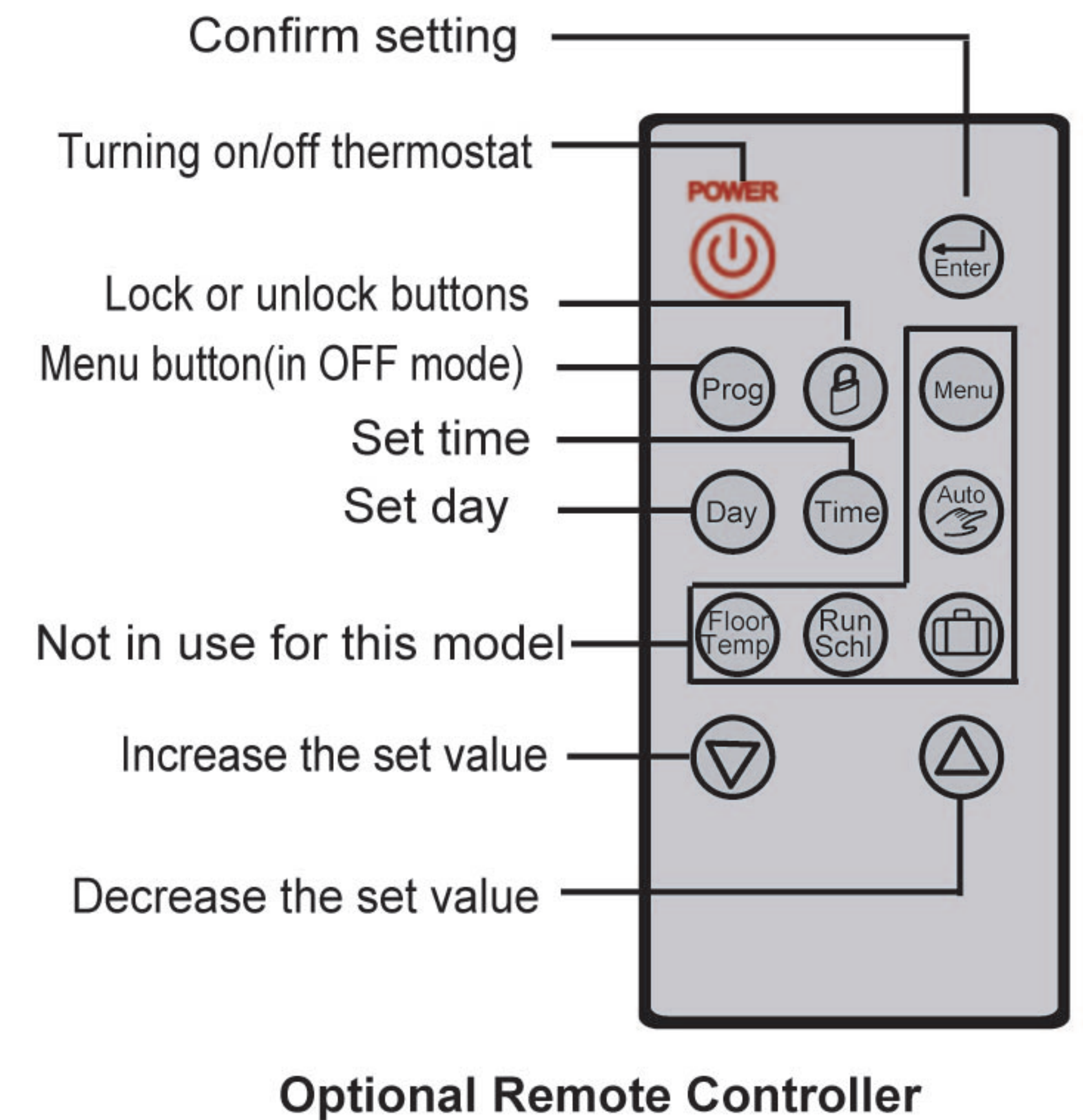


TR3100AC-F Thermostat Instruction (Part I)


Buttons and LCD display



Buttons / Icon	Description
	Turning on/off thermostat
	Menu button
	Set time and days; confirm setting
	Increase the set value
	Decrease the set value



Button / Icon	Description
	Cool mode
	Heat mode
	Damper is running
	The buttons are locked.
SET	Set temperature



Menu Settings

Press button  to Turn on/off the thermostat. When thermostat is turned off, the LCD will only display current room temperature. When the thermostat is turned off, press and hold button M for 3 seconds to bring up a configuration menu. In this mode, press button M to select different features' setting

Menu #	Features description	Features Explanation	Adjustment (press up or down button to adjust)
1	Switching differential	The numbers of degree difference before switching. The default is 1°C which means the thermostat will switch the heating on 0.5°C below the set temperature and will turn it off 0.5°C above the set temperature. With a 2°C differential, the heating will switch on 1°C below the set temperature and will switch off 1°C above the set temperature.	1 = 1 degree(default), 2 = 2 degrees.....
2	Temperature calibration	This is to calibrate air temperature if required.	-1 = decrease 1 degree, 1 = increase 1 degree...
3	Temperature format	This allows users to select between °C or °F.	°C or °F
4	Clock format	12/24 HOUR clock selection	24 hour(default)
5	Heat/cool mode	This is to allow users to select heat/cool mode.	 --- heat mode;  --- cool mode.

	<p>Please Note: one of the following error messages will appear if one of these problems occur:</p> <p>LO - This error means that the room or floor temperature is below 0°C</p> <p>HI - This error means that the room or floor temperature is greater than 50°C</p> <p>If the floor sensor is short-circuit or broken, the LCD will display "Err" and the thermostat will cut off output.</p>
	This product should be installed by a qualified electrician.

See overleaf for further setting up information

▼ Alternate between heat mode and cool mode

In standby mode, press and hold button (M) to switch to menu 5, use up arrow button or down arrow button to select heat/cool mode.

▼ Set time and days

The thermostat has a real time clock. To set time and days, follow steps below.

Step 1, press and hold button (⊗) until time display flashes.

Step 2, use buttons (▲) or (▼) to adjust time.

Step 3, press button (⊗) again, you will see days display flashing, use up arrow button or down arrow button to set day.

Step 4, press button (⊗) to accept.

▼ Lock and unlock the buttons

This thermostat is equipped with buttons locking facility to protect it from accidentally pressing.

To lock the buttons, press and hold (▲) and (▼) simultaneously for 3 seconds until the icon (🔒) displays, to unlock the buttons, repeat the step above.

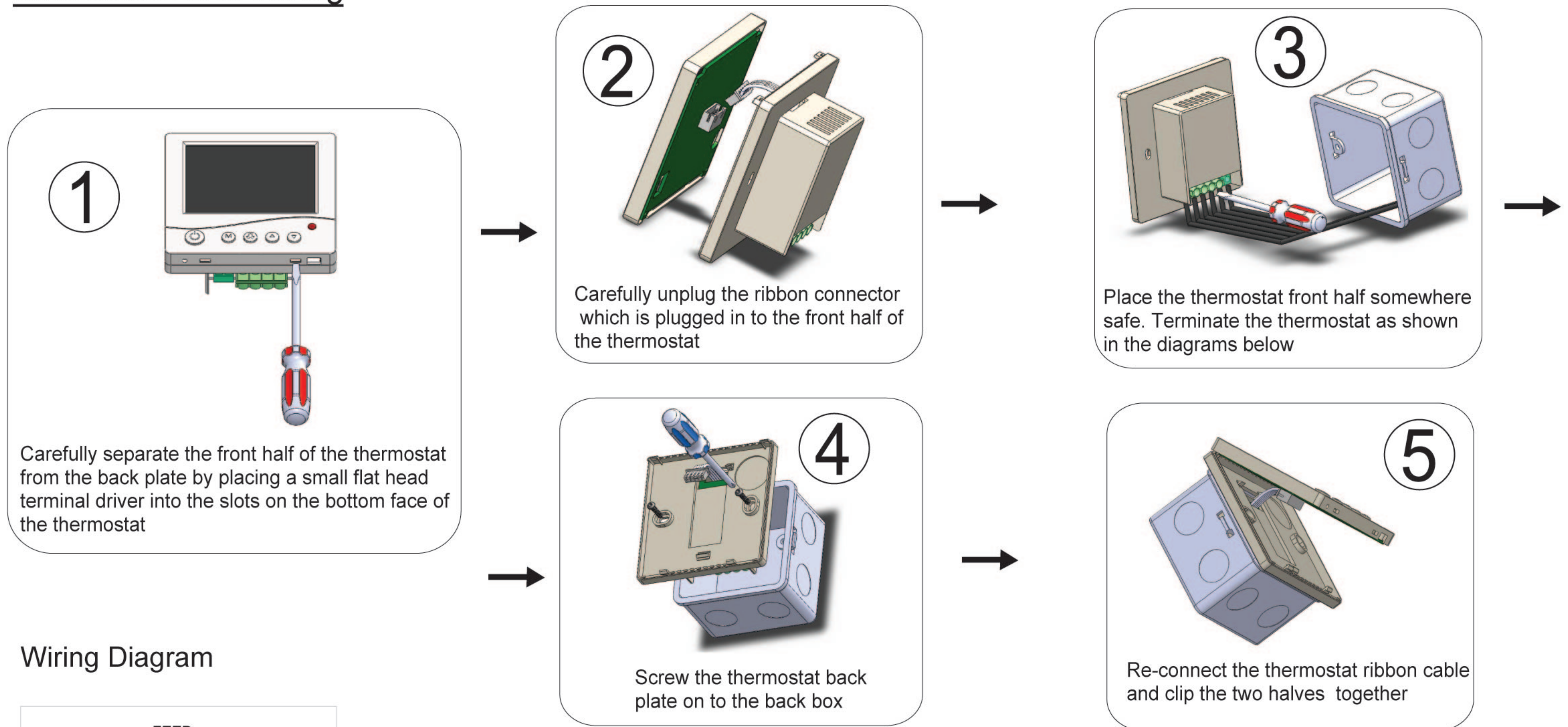
▼ Set temperature

Press up arrow button or down arrow button once, you will see set temperature flashing. Use up arrow button or down arrow button to adjust the temperature you want your room to maintain.

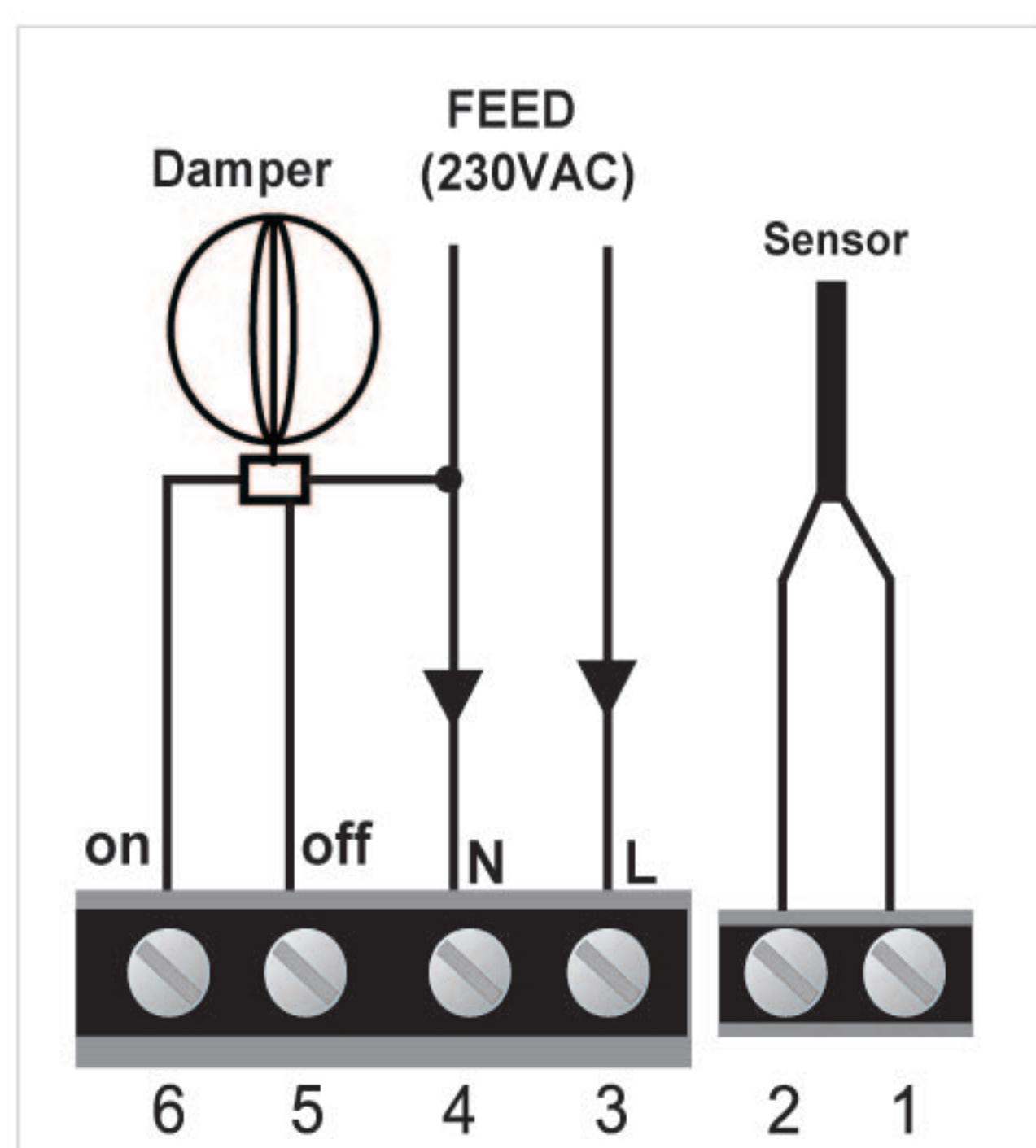
▼ Reset to Factory setting

In standby mode (when thermostat is turned off), press and hold button (⊗) and (M) for 3 seconds to reset the thermostat fully to the configuration it left the factory. There will be a RESET appearing on LCD for 5 seconds and this means the resetting is done.

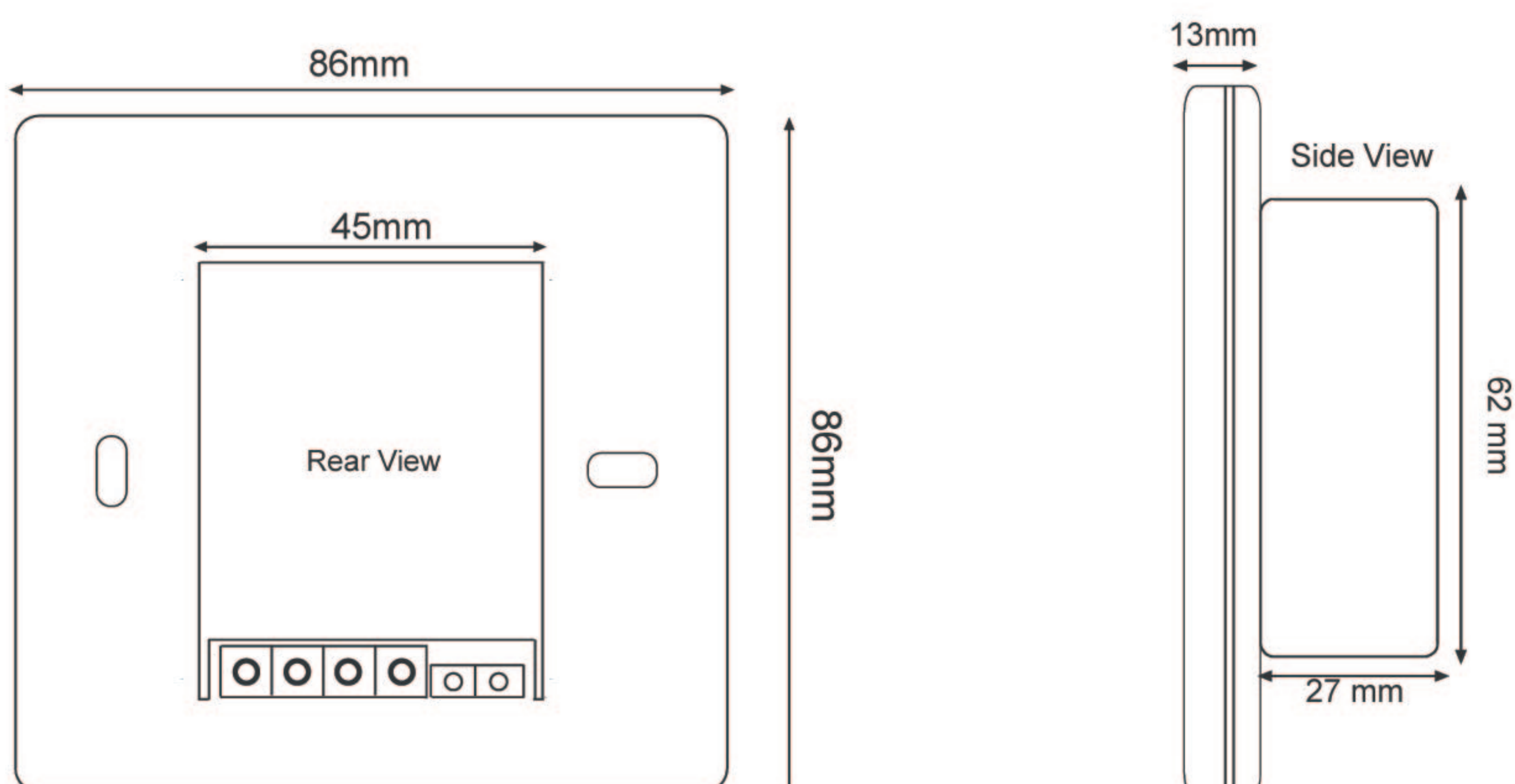
Installation and Wiring



Wiring Diagram



Dimensions



This product should be installed by a qualified electrician.